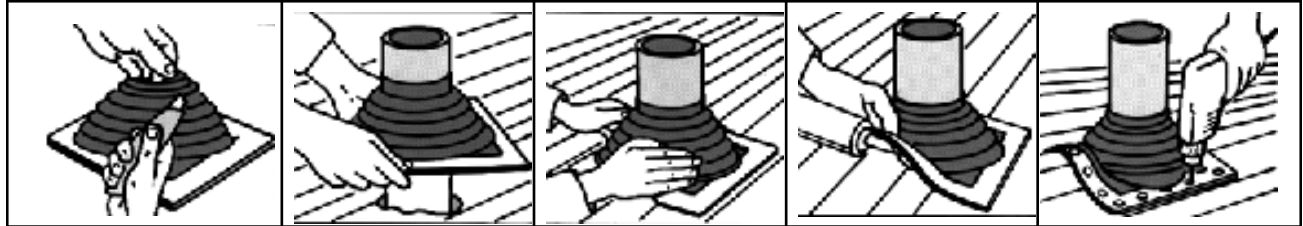




# Technical Data

## Square Base Pipe Flashing-Masterflash®



**STEP 1**

**STEP 2**

**STEP 3**

**STEP 4**

**STEP 5**

**STEP 1:** Trim opening to 20% smaller than pipe diameter.

**STEP 2:** Slide down over pipe.

**STEP 3:** Apply urethane/silicone sealant between Masterflash® and roof.

**STEP 4:** Press down, bending flashing to fit irregularities. Use large slot screwdriver to press into tight angles.

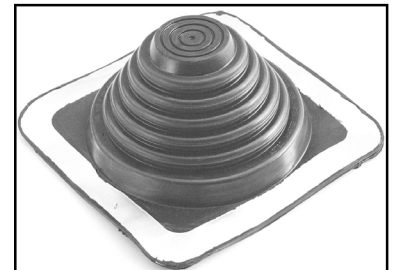
**STEP 5:** Use fasteners to finish sealing.

### SIZE CHART

Flasher's Size	1	2	3	4	5	6	7	8	9	10
Outside Pipe Diameter (inch)	1/4" to 2"	1 1/4" to 3"	1/4" to 4"	3" to 6"	4" to 7"	5" to 9"	6" to 11"	7" to 13"	10" to 18"	13" to 26"
Base O.D. Diameter	4 1/2"	6"	8"	10"	11"	12"	14"	17"	25"	34"
Top Diameter	Closed	7/8"	Closed	2 1/2"	3 1/2"	4"	5"	6"	8 1/2"	11"
Carton Quantity	15	15	15	10	10	10	10	5	5	5

### MATERIAL SPECIFICATIONS

Test Type	EPDM	Silicone
Advance ozone resistance test @500 pphm	70 Hours	70 Hours
High Temperature: Intermittent- Continuous-	275+ degrees F 212+ degrees F	500+ degrees F 437+ degrees F
Low Temperature: Resistance tested to- Tensile Strength-	65- degrees F 1,450 psi	100- degrees F 700 psi



511 Central Park Drive, Sanford, Florida 32771-6653  
407.328.5300 800.334.9815 407.328.5250 (fax)