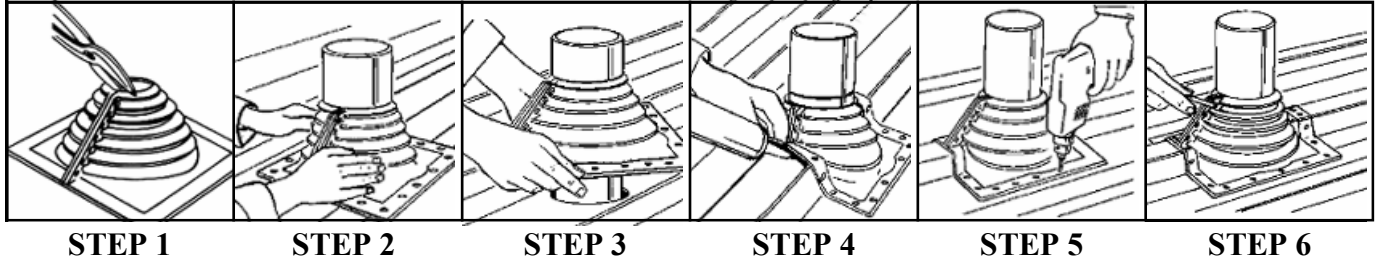


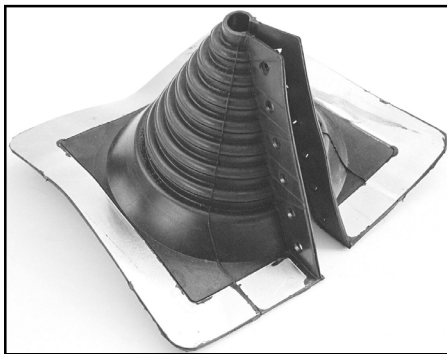


Technical Data

Square Base Retrofit Pipe Flashing-Masterflash®



- STEP 1:** Choose appropriated Retrofit. If necessary trim opening to pipe diameter.
- STEP 2:** Wrap Retrofit around pipe and install all snap rivets to seal flange.
- STEP 3:** Press Masterflash® down, bending it to conform to roof profile or roof irregularities. A blunt tool will help press flashing into tight roof angles.
- STEP 4:** Apply silicone sealant between base and roof.
- STEP 5:** Use fasteners to complete sealing. For UPC installation, fastener spacing may not exceed 1 1/2" (38 mm).
- STEP 6:** Install supplied cable tie at upper-most part of Retrofit and apply sealant to any gaps.



SIZE CHART

Flasher's Size	1	2	3
Outside Pipe Diameter (inch)	1/2" to 4"	4" to 9 1/4"	9 1/4" to 16 1/4"
Base O.D. Diameter	8 3/16"	14 1/4"	21 1/2"
Opening Diameter	1/2"	4"	9 1/4"
Carton Quantity	5	5	5

MATERIAL SPECIFICATIONS

Test Type	EPDM	Silicone
Advance ozone resistance test @500 pphm	70 Hours	70 Hours
High Temperature: Intermittent- Continuous-	275+ degrees F 212+ degrees F	500+ degrees F 437+ degrees F
Low Temperature: Resistance tested to- Tensile Strenth-	65- degrees F 1,450 psi	100- degrees F 700 psi

511 Central Park Drive, Sanford, Florida 32771-6653
 407.328.5300 800.334.9815 407.328.5250 (fax)